

# ART NEWS



Monthly News Letter// All India Fine Arts and Crafts society, New Delhi // February, 2015



## 5th All India Digital Art Exhibition 2015

Inaugurated by  
**Shri Suraj Ghai**  
An Eminent Painter of India  
on 15th February 2015 at 5.30 pm





Chief guest Shri Suraj Ghai releasing the catalogue



Chief guest Shri Suraj Ghai with the award winners

5th All India Digital Art Exhibition was held in the galleries of All India Fine Arts & Crafts Society from 15 to 21 February 2015. The initiative taken by AIFACS to hold All India Digital Art is well received by artists and Digital designers. The amalgamation of technology and creativity produced many intricate as well as simplified works of appreciable standard. This medium has been exploited all over the world. Its potential has been explored up to the maximum. Fantastic results has been produced.

The Society saw the potential creativity through this medium. This exhibition of all India level incited many young artists to explore their capability to produce creative work. Modern and traditional artists have been experimenting with all the sources of electronic media to express their creativity. The area has expanded and different mediums are used for multimedia works. In India still all the graphic arts are not widely accepted as compare to painting on canvas and paper. Always doubt arises to appreciate it as work of art like lithography, etching, serigraphy, woodcut, linocut and now digital art has added another

dimension to the medium of graphic art. Digital art or new media art, its creative viability and commercial viability is clearly visible, because it involves creativity and knowledge of art and elements and principles of design.

Along with the conventional method of painting artists have accepted the non-conventional methods like digital technology for creative effects in different mediums like mass communication, animation, book designing, web designing and so on.

Computers have given new life to human development. No industry has been left untouched. So is the creative fields like painting, sculpture, graphics, printing etc..

The difference between digital art and digital photography remains a matter of debate. Digital art may be compilation of elements which are not part of the first shot or composition. Lines or textures are created as per the requirement of the artist. But in digital photography first a photo is shot and its some areas or parts are enhanced in contrast or some unwanted elements removed. The photograph does not loose its originality. No extra element is added in the photograph.

Chief guest Shri Suraj Ghai addressing the gathering on the opening of the exhibition





The selection and judging was done by the single jury Shri Dattatraya Apte who selected 107 works out of 173 works submitted by artists. He recommended seven works for awards. Dilip Kumar Tailor from Ghaziabad was awarded cash award of Rs. 25,000/-, Rahul J Gajjar from Vadodara, Mohd. Shamsad Alam from Balia (UP) and Prafulla P Kshirsagar from Nagpur were awarded Rs. 15,000/- each. Santosh Jain from New Delhi, Ritu Agarwal from Nahan (HP) and Mrinal Kanti Dhali from Kolkata were awarded Rs. 10,000/-each.

All the works were making a good showcase of experimental digital works. there was a big range of technics and concepts. Dilip Kumar Tailor's 'Café Closed' is connecting two different periods- Renaissance and modern. Monalisa and Drawings on the background wall depict the beginning of a fresco. Mrinal Kanti Dhali made a very effective portrait high finish photo converted into hard sharp edged details of skin and hair. Anshu Kumar's 'Dreamer' is a photographic image juxtaposed with vertical lines flowing down the face takes to a deep thought. Dalip Chandolia's 'Freedom of Colours-1' has produced transparent tones overlapping create many layers. Dhruva Sonar has created a dramatic scene by two figures, double image of

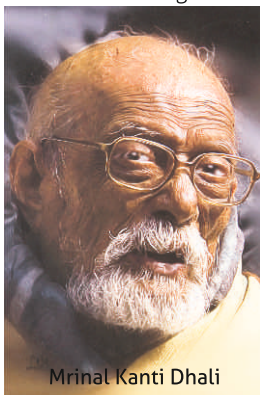
himself to symbolize one bad character from himself. Gautam Kumar used texture of a tree trunk and created a ghost like image by putting two comic like eyes which stare at viewer. Manish Verma's portrait has characteristics of a work of bold brush strokes. It is different from the general applications of a digital work. Rahul J gajjar's 'Study-1' is very sensitive pen & ink drawing like strokes overlapping and produce mass of dark colour which created dimension to the bird like image. Santosh Jain's 'Trapped' is mannequin like standing figures placed at two levels can be shifted to any level or corner to make good composition. Urvi Vipul Vakharia's 'In Mind' is inspired by sculpture. A head study made like POP sculpture with hand placed like that of thinker. Sushant Chatterjee made his digital work as if made with charcoal. A free flow of strokes make it a sketchy work. Sanjeev Kumar created a surrealistic landscape with heavy cloudy background. A photographic approach to this composition takes to the realism. Rajendra Dindorkar's 'Violin Player' is stylized drawing based composition which depicts mood of the violin player. The treatment is like a painting made in oil or in acrylic colours.

All the works in this exhibition show different treatments, technics, and individuality.□

Some of the Digital works from the exhibition



Santosh Jain



Mrinal Kanti Dhali



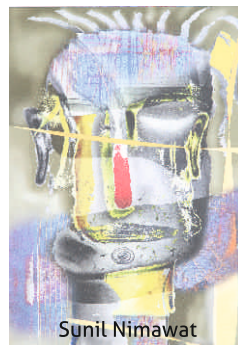
Sanjeev Kumar



Dalip Chandolia



Anshu Kumar



Sunil Nimawat

# Sandristi II

## an inner vision

A group show of paintings and drawings was held in Open Palm Court Gallery, India Habitat Centre, New Delhi from 10 to 16 January 2015. Five promising painters from Odisha have come with their representational works based on their own individual concepts and idioms.

Rajesh Kumar Nayak worked in various themes but music becomes part of his compositions. Game of chess and playing a flute may create tension as well as pleasure to the viewer. It seems mythology played some part in his themes. He has balanced his compositions with relevant elements. His figures change according to the concept from rhythmic posture to strong bold human figures.

Chatrapati Sri Dibyaranjan Biswal is symbolic in his conceptualization. He has used umbrellas to symbolize the life and energy. It protects us but placing umbrella upside down provokes to think about some new thoughts in modern

context. Fish, umbrella and lantern bring life with representational thought based on socio economic and cultural flavour.

Sashikanta Rout is a painter with some romantic touch. He has given different treatment to different work. His figure's back with raised spinal cord with any number of vertebrae. Anatomy is to be ignored and concepts becomes dominating. The lady sitting with a squirrel and flowery texture adds to the environment friendly concept.

Tapan Kumar Moharana's figures are flexible and placed in very rhythmic postures. The contact with fruits symbolizes the environment friendly relationship. Admiration of elements give some psychological feelings. The figures are large in size, does not reflect robustness. They are soft and fluid.

Gajendra Prasad Sahu tried to explore relationship and its subtle importance make things emotionally charged. The linear profiles facing each other trying to communicate. Surrounded with the foliage symbolizes the true and purity of the relationship.



Divyaranjan Biswal



Tapan Kumar Moharana



Sashikanta Rout



Gajendra Prasad Sahu



Rajesh Kumar Nayak



# Pratham Ankuran of Art

A group show of paintings was held in the gallery of All India Fine Arts & Crafts Society from 6 to 12 January 2015.

Rakesh Kumar painted abstract landscape on an experimental basis. The strokes and flow of colours created movements. The picture plane is well divided into different distances which create huge spaces in the used area. His charcoal drawing has architectural excellency. This contrast of concepts and change of medium makes the subject matter more relevant.

Vipin Kumar has been visualizing things from a bird's eye view. His viewing of city from that angle covers huge area which gives new experience he has not experienced yet. The symbolic figure viewing the city as if a caretaker viewing for the welfare of the city dwellers. This also helped in creating vast space upto the horizon.

Meet Narang conceptualized his compositions with musical notes. Mood and music makes the atmosphere perfect. It is one of the activities that involves concentration. Music belongs to all cultures. They have their excellency in the type of music they develop with the time. Paintings of meet Narang reflect the present scenario with modern music. His paintings not freezing the music, rather creating vibrations. Enjoying music and enjoying paintings with musical theme have

similar vibrations.

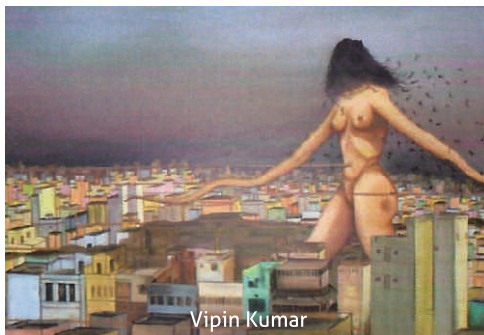
Preksha Jain is an environmentalist and nature lover. Her concepts reflect the life of trees and its growth to a strong straight tree. It is shown in different stages and different compositions depicting one common aspect- life and strength. The rhythm of nature has been understood well to show the growth of trees in a rhythmic way. Floral designs in rhythmic lines and tinted with transparent colours soothe the surface.

Rahul Singh is also involved in representing the sensitivity of nature. His five elements are presented with soft whirling colours showing spiral movement. Earth element represents the quality of solidity. Water represents the quality of liquidity. Fire represents the quality of energy. Air represents the quality of expansion. Space element includes bodily orifices. Artists work in all these feelings and express in their own way. The sensitivity of flower petals show the softness of petals.

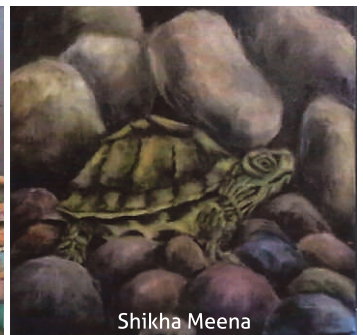
Sheekha Meena Presented the still life with one single vase made of metal. It reflects the richness of the traditional craftsmanship. It has been excellently executed. Turtle surrounded with stones of varied sizes symbolizes the toughness of turtle's shell. The design on the shell reflects the beauty to admire by artists. A simple composition creates interest to admire.



Rahul Singh



Vipin Kumar



Shikha Meena



Meet Narang



Rakesh Kumar



Preksha Jain

# Metamorphosis of Power

Exhibition of paintings by Rubkirat Vohra was held in Triveni Art Gallery, New Delhi from 13 to 21 January 2015. She is an architect by profession but established herself as a painter for her expression.

If her paintings are seen through the angle of architecture then one may not find the influence of any kind. Her paintings have the subject matter, may be a common thought or the influence of environment.

Herculean jump in 'The Leap' is as if a man would cover the whole city over the skyscrapers. Contrast of two textures like building blocks in the background and colour of human skin of legs compliment each other. From a very common structure of the bygone days to the modern high rise is spanning a period.

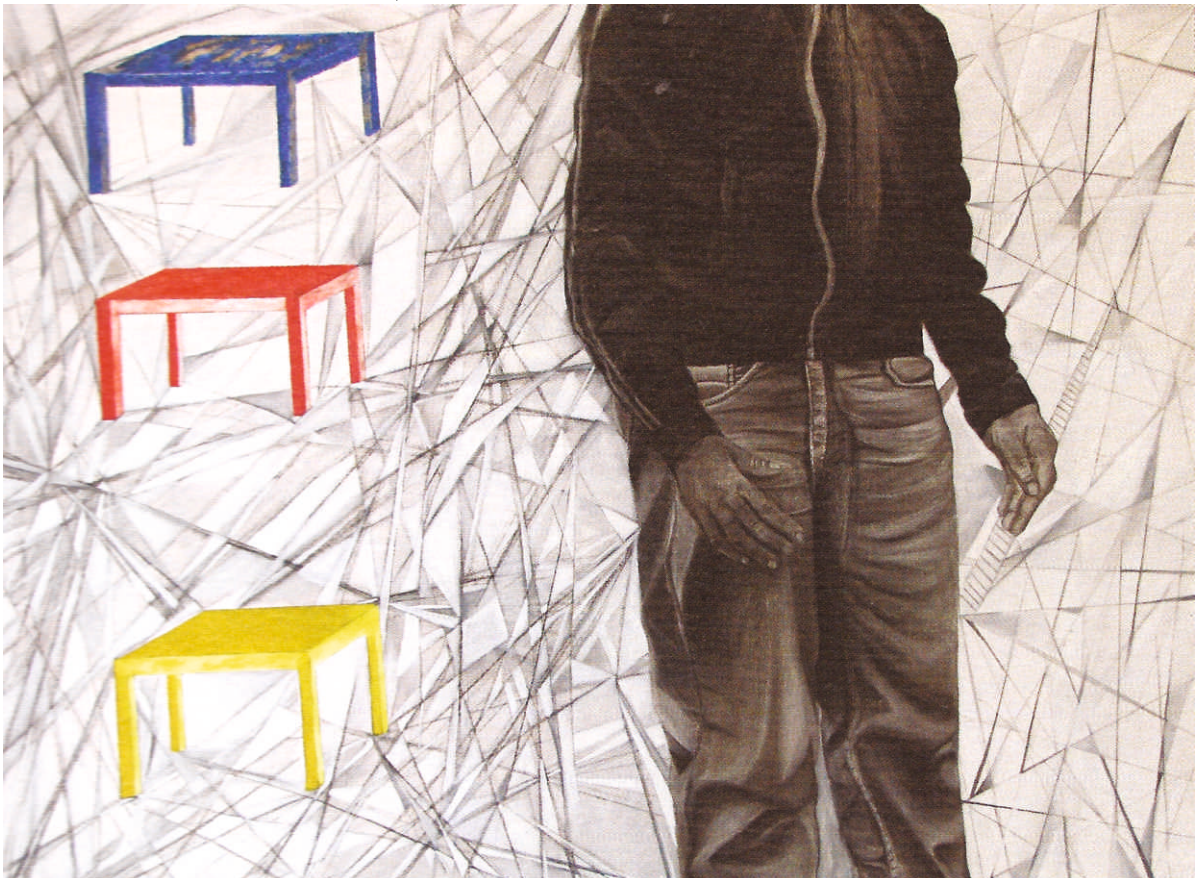
On the contrary to the painting titled 'The Leap' painting 'The Engulfed' creates infinite space. Lone man sitting on a chair under blue

sky gazing the horizon and experiencing the vibrations created by the clouds, waiting for some celestial body to come out of the clouds or experiencing anhad nad (celestial sound) which gives him some spiritual touch. The man in the painting may be enjoying or experiencing the energy which nature gives but architectural lines on the horizon and in the sky are a different plane which disturbs the vision to enjoy the vastness of space.

'The Inconspicuous' is creating many doubts that how the man who is painted up to his shoulders with three coloured tables denote some progression. The body language creates some doubts and confusion which creates some disturbed harmony. Well knit by criss-cross lines with conte.

Rubkirat has played with shadows in few works which give stability to the objects. Her compositions are well divided and balanced.

'Inconspicuous' oil and conte on canvas 40" X 50" 2013





# Deep Desire Floating Feelings

A group show of paintings, sculptures and photography was held in the gallery of All India Fine Arts & Crafts Society, New Delhi from 22 to 28 February 2015.

Indian miniature style by Runu Mishra and Rajarshi Adhikari showed the mythological themes of Radha Krishna. S P Verma presented landscapes with paper cuttings and the impression of the corrugated sheets. Rabi Shankar Naskar's sculptures in bronze show the odd situations of animal life in the modern living. Hina Fatima is an abstract landscape painter. Priyanka's photographs show daily life in a village. Meenakshi's compositions with Devnagari alphabet M has been explored in different compositions. Subhendu is more symbolic in using images of mythological characters. Khokon has expressed through circular face and moon. Md. Husain has

entangled a female face in may different objects. Nabin has shown the feeling of unlimited space where few figures walking as negligible identity. Vishnu Kumar has used free strokes to create portraits. Sekhar has a surrealistic approach to express a hand in a dominating position. S A Jafar's journey of life from bud to flower is the stages of human life. Divisions of spaces express the stages. Pradip Pradhan painted the beauty of the female figure and compared with the blooming flowers. Vijay Yadav shows three dimensional heart to express his sacrifice for others. Rahul created some illusions by treating his works differently. Rajoo Ram created some images through the textures on canvas. Poonam Nag's photographs have more painterly qualities. Rajib's water colours shows the ruins of bygone era. Poulami Sen is concerned with the cultural heritage. Syed Azhar played with the textures of an old door. Sukanta shows the seed kind of form in his sculpture to show door to hell. Md. Tauqueer's peacock is in a peaceful posture.



Sukanta Halder



Poonam Nag Chaturvedi



Nabin Das



S A Jafar



Priyanka Chander Naskar



Subhendu Biswas



Khokon Raut



Meenakshi Thakur



Pradip Pradhan



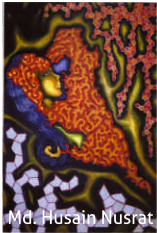
Runu Misra Banerjee



Rabi Shankar Naskar



Vishnu Kumar Saini



Md. Husain Nusrat



Rajoo ram



Poulabmi Sen



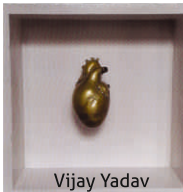
S P Verma



Sekhar Biswas



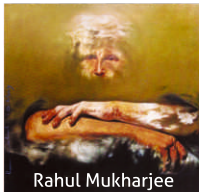
Rajarshi Adhikari



Vijay Yadav



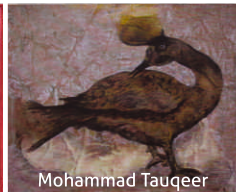
Hina Fatima Moi'nee



Rahul Mukharjee



Syed Azhar



Mohammad Tauqueer



Rajib Sikdar

# Paper art of Ingrid Pitzer

She held her show of paper pulp in Shridharani art gallery, New Delhi from 26 February to 9 March, 2105 along with Vanita Gupta.

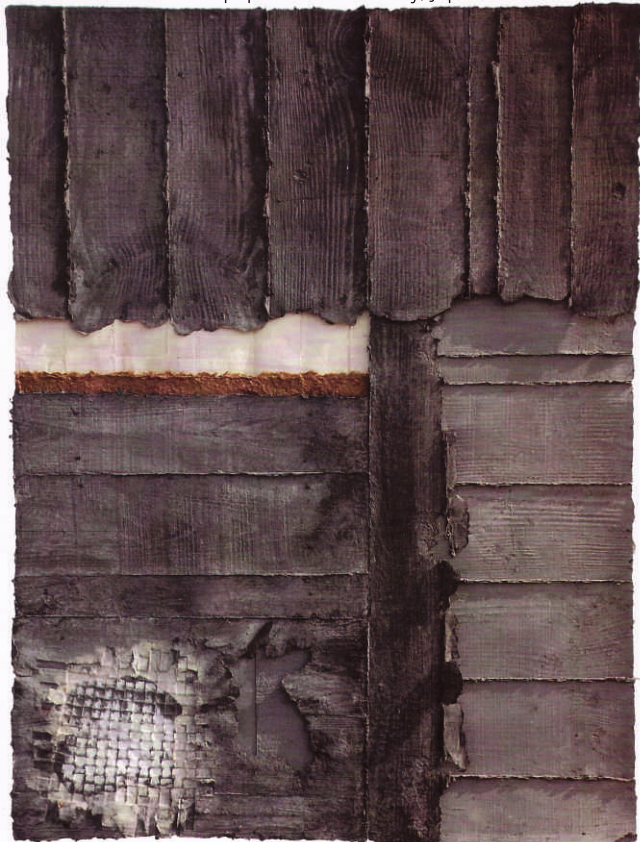
She graduated from University of Fine Arts, West Berlin. She held 23 solo shows of her works around the globe which includes Berlin, Japan, Egypt, USA, Spain, Switzerland and India. Paper pulp has been used in many ways in different regions of India for ages. In the modern context many artists have been experimenting new possibilities. We remember, 'Wounds' series of Somnath Hore on white paper pulp. Ingrid added colour in the pulp. The coloured pulp gives greater possibilities to create different dimensions to the works. Different textures add to the surface feelings. 'Joshi' cast paper from mulberry and use of ink to give the effect of antiquity. Strong stipes placed vertically and horizontally leaving gap for a red line gives the feeling of space of a window. This

soft and fragile material has been treated like very strong and hard surfaces in her works.

'Silsila' is a cast pulp work which might be taken from a slab of stone. It reminds the rock paintings of Palaeolithic period which are available in many places in the world. Along with the rock paintings there are rock engravings and rock carvings. Ingrid's this work is metamorphosis of natural event of the time, it shows many animals and human beings. Some of them are fossilized images. The dye put in the pulp made it a rock like surface- Strong and tough.

Ingrid described her process of material, "The joy starts with going to a park, garden, into fields, a forest, a beach or even to a local market in search of plants, the raw material for making paper. In reality all paper is based on plants. After an extensive procedure: to cut, to peel, to boil, to rinse, to bleach, to dye, to beat, to cast, to spray, to dry- for hours and hours- the plant fibers become paper. Paper art.... I experimented with many of them such as wood, iron, granite, sandstone, earth, bark, leaves, fabric, straw, bamboo, even with plastic foil. What stimulates my work is always my environment."

'Joshi' 1995 cast paper from mulberry, jap. ink 54" X 43"





# Paintings & Sculptures Vanita Gupta

She held her exhibition of paintings & sculptures in Shridharani art Gallery from 26 February to 9 March, 2015 along with Ingrid Pitzer. She graduated in painting from L S Raheja School of Art, Mumbai.

Vanita Gupta and Ingrid Pitzer both are working in the abstract concepts for their expression. Vanita's paintings are done in ink on paper and some in acrylic colours. All her paintings are executed in black & white. She is expressing best in this medium. Her compositions are having one dominating, strong stroke supported by some tones and textures.

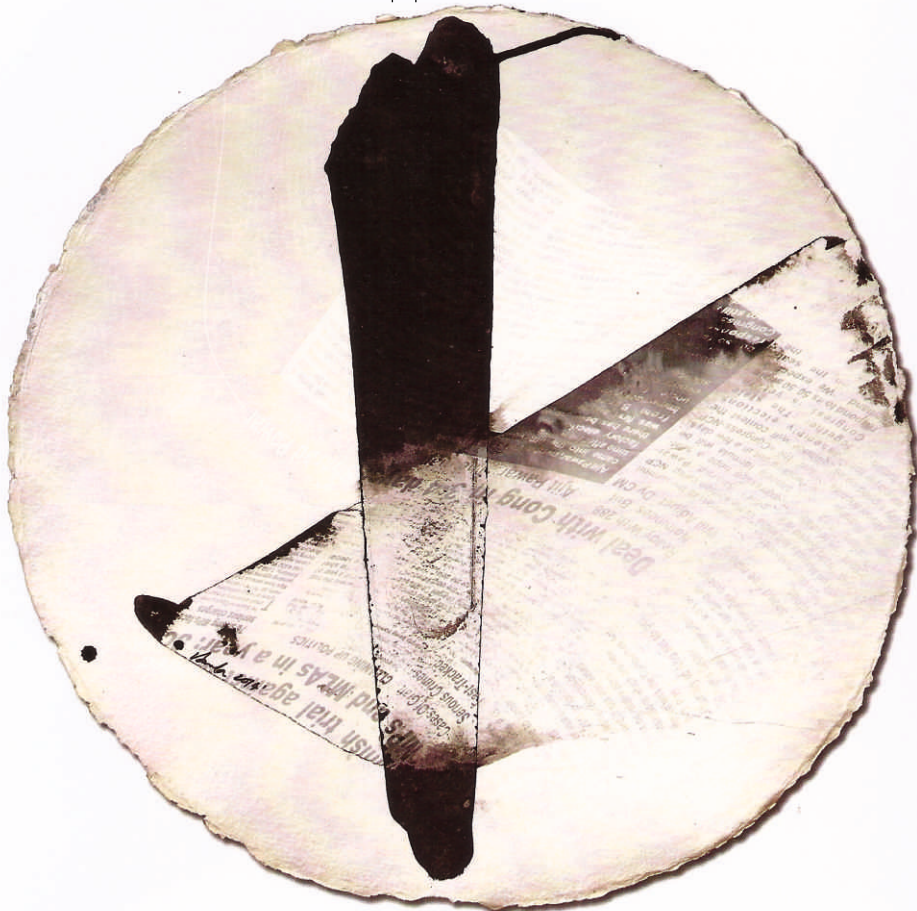
Vanita's abstract or say nonfigurative compositions try to explore that strong strokes. The spaces and tensions are created with heavy strokes of black colour. Some texture and write-up of news paper may give some social or political statement. Tones and textures in her

works give some relief to that strong stroke. This abstraction bears no trace of anything recognizable. Her works fall in this category but creates some dynamic energy in that used space. Bold black brush strokes create definite form which create definite division of positive and negative spaces. wash tones along the heavy strokes gives relief and dimensional effects.

The sculptures displayed in this exhibition are the simple forms with metal beating and metal casting. These two processes are very effective and versatile. The quick results can be seen in the beating the metal sheet to the desired shape and simultaneously see the results is the part of excitement also. The metal sheet bent or metal cast are the characteristic of her concept and there is similarity in shapes and forms. The application of gold leaf on the surface of the brass surface convert it into a rich surface which illuminates the object and a new dimension makes the surface effective.

Medium plays its role but Vanita could explore them in her creative pursuit.

Black ink on paper 2014 16" diameter



# Samarpan

An exhibition of paintings by Shalini Srivastava was held in the gallery of All India Fine Arts & Crafts Society, New Delhi from 1 to 7 February 2015.

Shalini Srivastava held her 5th solo show titled 'Samarpan', for which she has chosen to explore the images of Ganesha, Shiva, Krishna and Buddha. These are the most loved images from our religion and Mythology. She has covered some iconographic elements which can be seen in her works.

Krishna is considered the supreme deity and worshiped under many Hindu rituals. He is portrayed in many ways by artists of all periods. He is portrayed as an infant eating butter, as a young boy playing flute, a model lover and as an elder giving guidance in Bhagavad Gita. These stages are very well and sincerely painted. Krishna of Shalini has been identified in these situations which are popular and well accepted

by all.

Buddha 'The Enlightened one' has also been painted by artists all over the world, specially the eastern world. Her many paintings on Buddha are on a meditating mood. Buddha has been visualized in a decorative manner like carved sculpture. His deep meditating closed eyes is the right path to awakening. Shalini's paintings have similar subjects like; 'Monks in search of Nirvana', is painted with a row of monks climbing the true path and Buddha's blessings are always with them. A peaceful and quiet atmosphere makes the painting true to its theme.

"Buddha Delivering Sermons" is that stage of life when Buddha 'The Enlightened One' wanted to show the Middle path to his followers. The Buddha is shown in the painting as a main figure and followers around him are smaller. Similarly her paintings titled 'Enlightenment', 'Buddha in Meditation', 'Tranquility', 'Radiating Solace', 'In Deep Meditation' are true to the life of Buddha and his teachings.

Shalini's other paintings of Ganesha, Shiva and Sai Baba are part of her theme. She needs to come out of it for her creative pursuit.

'In Deep Meditation' oil on canvas 36" X 48"





# Words & Images

Three illustrators exhibited their works in the gallery of India International Centre Annexe from 18 to 24 February 2015.

Suddhasattwa Basu is a well known painter, illustrator and animator. His illustrations for children's books has been well recognized in many countries. He showed most his editorial illustrations which he worked for Economic times and later Business Today for more than six years. It is the type of work needs different mind set to understand the intricacies of financial business and illustrate the core theme of the subject matter.

Understanding the modern business & market trends and creating the perfect idea on paper is the excellency Basu acquired. The illustration 'A Modern day David vs. Goliath' showing the right picture of the economic trends. He has illustrated more than 56 books so far which include 'Nature Watch' by Khushwant Singh, 'To live in Magic' by Ruskin Bond, 'The Home Coming' by Vijaya Sulaiman, 'The Story of Garuda' by Roberto Calasso and 'Mahabharat' by Namita Gokhle. His own authored and illustrated book 'The Song of a Scarecrow' got honorable mention in Biennale in Bratislava.

Mala Marwah graduated B. A. (Hons.) in English Literature from Lady Shri Ram College, New Delhi. Did her painting as major at the California College of Arts and M. A. in Art History at the Faculty of Fine Arts, M. S. University Baroda. She worked as Assistant Editor, Lalit Kala Akademi, conducted classes in art history at Film and Television Training Institute Pune and at Faculty of Fine Arts, Baroda. She has been writing and illustrating books for children. Her pen & ink drawings of interiors are intricately designed and executed. The Victorian like interiors make the rooms full of heavy objects and much of the decorations on walls make them still heavier. She has placed every object needed for an interior are used. Her drawings have the characteristic of line etchings.

Sujata Singh did her B. A. (Hon.) in English from Lady Shri Ram College, University of Delhi. She did her foundation course at Central School of Art & Design, London and graduation in Graphic Design & illustration from The Wimbledon School of Art & Design, University of the Arts, London. She worked for children's books for Living Media, Katha, Scholastic, Penguin India, Ratnasagar and Macmillan. Illustrated for number of publications for editorial illustrations. If we see her works, it becomes difficult to differentiate between illustration and painting. each and every illustration is full of contents which are needed to narrate a story. Spaces are well interwoven to establish strong compositions.



A Modern Day David & Goliath by Suddhasattwa Basu



Woman Dozing by Mala Marwah



The Eye of a Peacock by Sujata Singh

# Saumyata

Art Alliance presented a group show of paintings in the gallery of Lalit Kala Akademi, New Delhi from 21 to 27 December 2014.

Austin Konchira presented abstract compositions. At certain stages some figurative image is visible. His paintings may give the partial expressionistic style.

Banoj Mohanty has been working with social message to awaken society. All his paintings narrate stories to illustrate social message.

Deepali Manglik has lived in the beautiful natural surroundings. Enjoyed the flora and fauna of that region but her paintings have visible strong shapes, lines and circles.

Dinesh Kumar Parmar has explored the man and woman relations. His figures are reflecting simplicity and specific cultural environment.

Padmini Mehta has been exploring many different themes for her paintings. Lately she has seen some possibilities in holy city of

Varanasi and explored it.

Rajeev Semwal has explored new images in this exhibition. The linear images of animals in a decorative format captured in their own surroundings.

Rajni Kiran Jha combines female figure, fish and lotus. All have its symbolic representation in our social structure.

S Sheshadri painted mountainscapes to express his thought. The red colour of mountain may be the special effect of sky before sunset.

Sahil Jain worked on many subjects at a time and converted in to an assemblage of different themes and make a big statement.

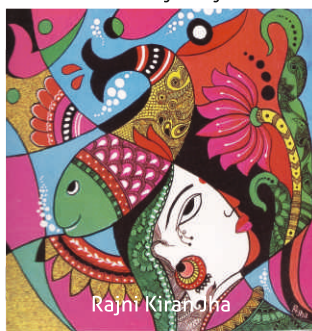
Saru S makes a male figure in a way to express his turbulent mind which is the result of agony he is carrying with him.

Surendran P Karthyayan painted very cool and comfortable landscape with decorative trees in foreground..

Sunita Lamba is the only sculptor whose figurative pieces with comfortable sitting posture in his/her environment.



Sunita Lamba



Rajni Kiran Jha



Padmini Mehta



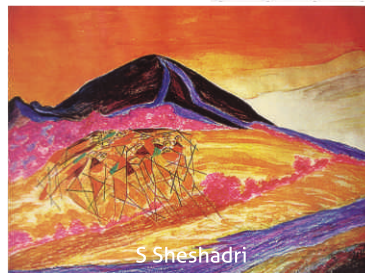
Sahil Jain



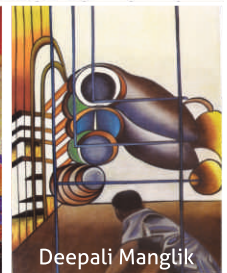
Saru S



Dinesh Kumar Parmar



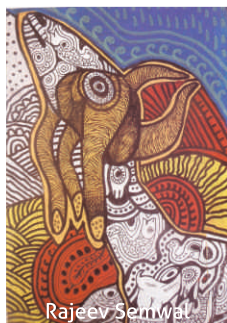
S Sheshadri



Deepali Manglik



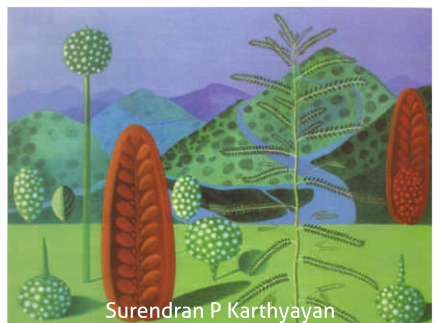
Austin Konchira



Rajeev Semwal



Banoj Mohanty



Surendran P Karthyayan